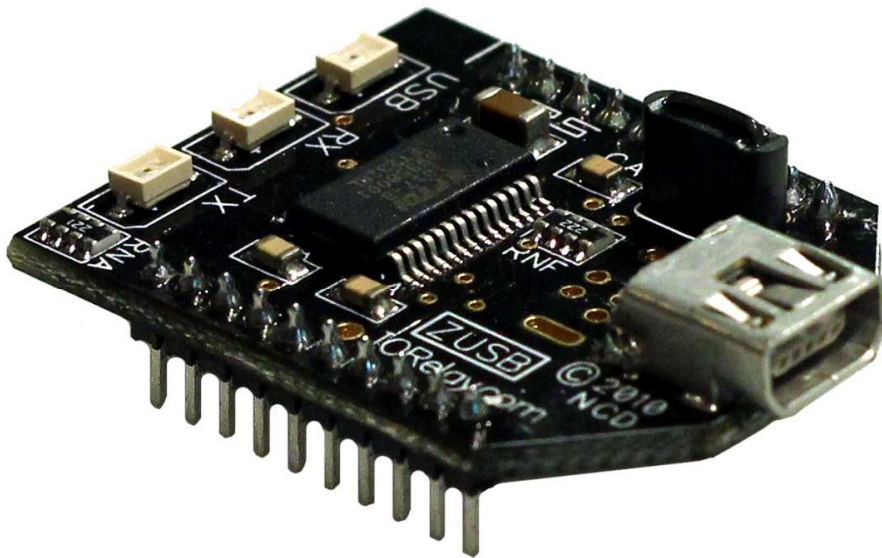


# Quick Start Guide

# ZUSB

## Universal Serial Bus Communications Module



Copyright © 2012  
National Control Devices

All Rights Reserved.

NOTICE: Portions of this Manual REQUIRE Internet Access

# Getting Started

## Things you will need:

- ZUSB Communication Interface
- USB Cable
- A Computer running Windows XP, Windows Vista, Windows 7 or any Version of Linux. Note that we develop software for Windows operating systems, so we advise having a Windows PC available for initial testing.

# Setup

1. Connect USB cable between your ZUSB Communication Interface and to your computer. The ZUSB communication module should be installed into a compatible controller that supports the ZUSB communications module. The device should be powered for initial testing.

2. Virtual COM port drivers are required before the ZUSB communications module can be used. Windows 7 typically recognizes this device without drivers, however, the latest drivers may be downloaded and installed from the following location for all operating systems: <http://www.ftdichip.com/Drivers/VCP.htm> This link also contains installation instructions appropriate to your operating system.

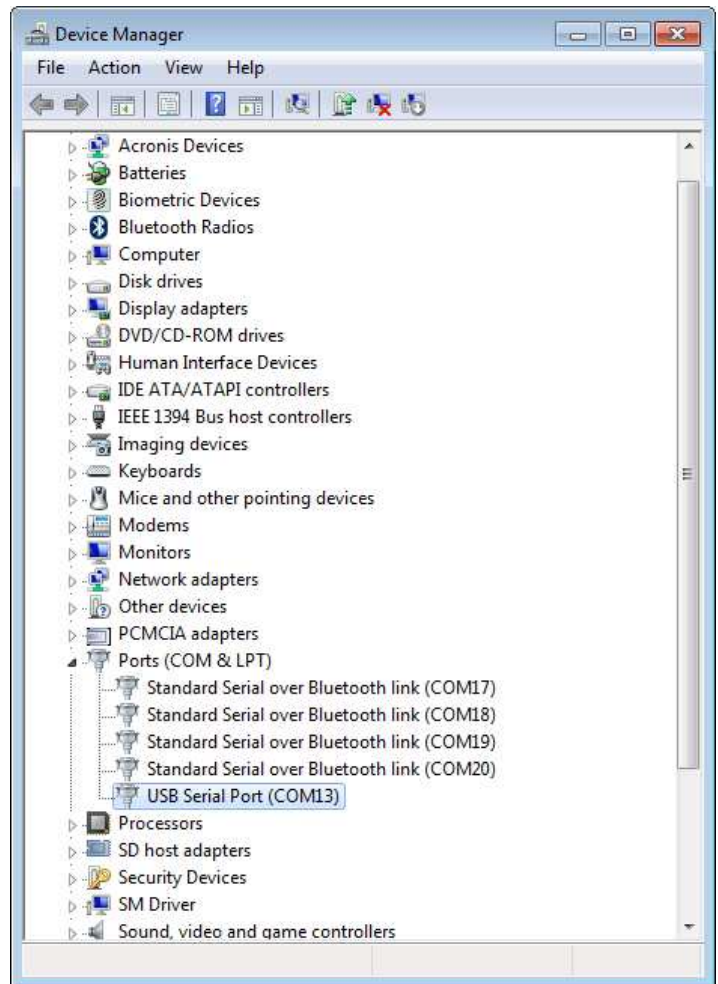
3. After the driver is installed, open your “Device Manager” to determine the COM port your computer assigned to the ZUSB module. Windows 7 users may Click the Start > Control Panel > Device Manager

4. You should see “USB Serial Port” located under “Ports (COM & LPT)”

5. Take note of the COM port assigned to the ZUSB communications module. This COM port will be used to access the device using our software. In the screen shot shown, COM13 was assigned. When running our software, COM13 will be used to access this device. It is possible to have multiple devices installed on one computer, each device will have its own COM port number assigned to it.

NOTE: The USB Light will on the ZUSB communications module will only illuminate if the virtual COM port driver is properly installed.

\*If the device remains undetected, try disconnecting and reconnecting the power and USB cables.



*In the screen shot shown above, COM13 was assigned to the ZUSB communications module. Take note of the COM port number that was assigned to the ZUSB before running any of our software utilities.*